

A Region of Influence

Texas A&M International University
Office of Global Initiatives

Binational Consortium
Texas/Mexico Border





Centers of Influence-300 miles





Regional Value

- Total U.S. Int'l Trade: **\$3.97 Trillion**
- Regional Ports: **\$533.32 Trillion**
- 13% comes through this region
 - Port data: **\$280.03 billion - Laredo**
\$253.29 billion - Houston



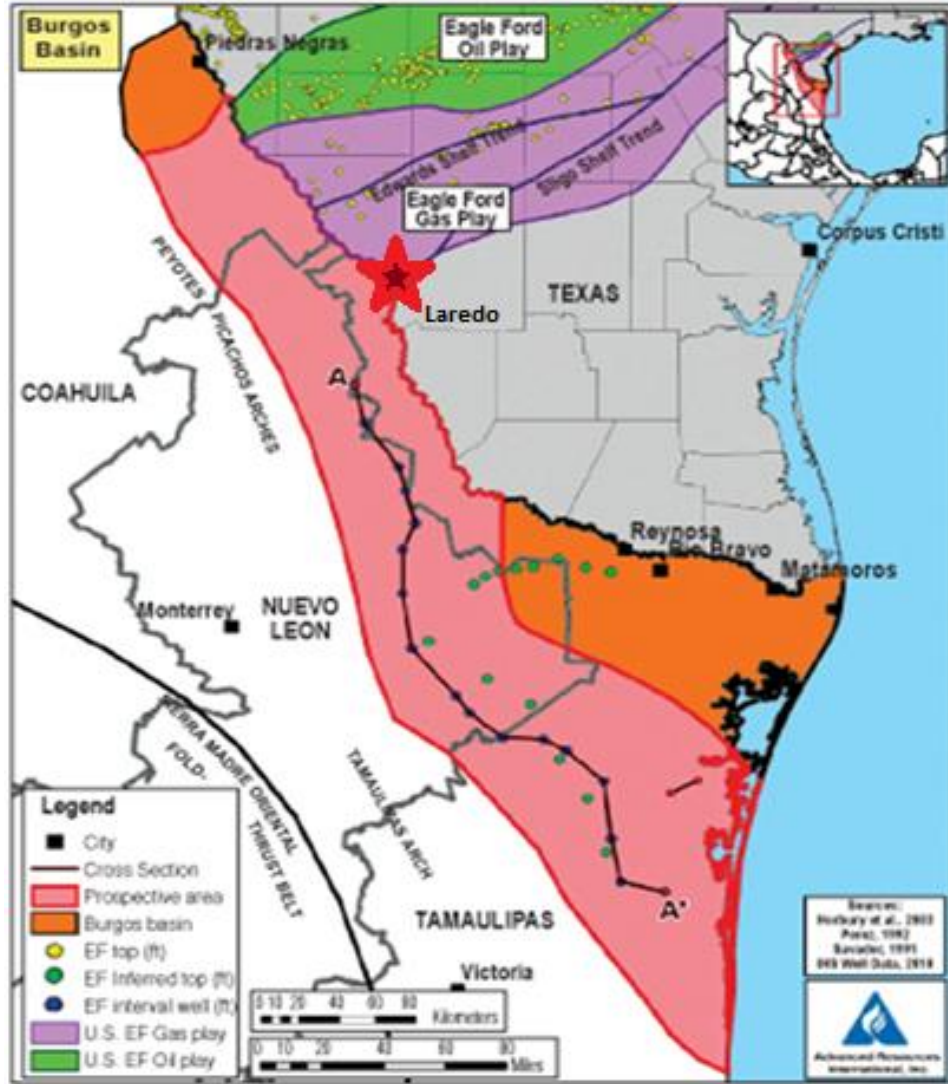
Industrial Development

PRO

- Regional Access to Abundant & Inexpensive Energy
- Experienced logistic managers
- Vast expanse of underdeveloped urban areas available



Where can Industrialization happen?





Shift from Maritime—Why?

Outstanding Model of Experience & Reputation

- Port deliveries - timely, efficient, and on demand
- Example: HEB

Trans Pacific Partnership

- Chaos in California - 2 Billion lost daily
- Bring manufacturing to our region



Infrastructure

Readiness-

We have and need to expand

- Highways - best quality
- Bridges - we need more
- Seaports & Inland ports - expand capacity

http://www.wilsoncenter.org/sites/default/files/Border_Economy_Transition_Wilson_Lee.pdf



What is our next step?

Agenda Conjunta

– A Binational Collaboration For a Successful Region



THANK YOU

For more information please contact:

**Maria Eugenia Calderon-Porter,
Asst. Vice President, Texas A&M International University
Office of Global Initiatives/Binational Center
Laredo, Texas
Telephone: 956-326-2834
Email: Mcalderon@tamiu.edu**

www.tamiu.edu/binationalcenter